



MV Pomella [+1942]

Details

general

nationality: [british](#)
 purpose: transport
 type: [tanker](#)
 propulsion: [motor vessel](#)
 date built: 1937
 status: live [+](#)



details

weight (tons): 6766 grt
 dimensions: 139,4 x 17,7 x 9,8 m
 engine: Twin 12 Cyl. Oil engines, engines aft.
 power: 502 n.h.p.
 speed: 11.5 knots

about the loss

cause lost: [torpedo](#)
 date lost: [09/07/1942](#) [dd/mm/yyyy]
 casualties:

about people

builder:  [Cammell Laird & Co., Birkenhead](#)
 owner:  [Anglo-Saxon Petroleum Co. Ltd., London](#)
 captain:

about the wreck

depth: 54 max. / 38 min. (m)
 orientation: 15°
 protected:

updates

entered by: [Letpens Jan](#)
 entered: 27/08/2008
 last update: [Vleqqeert Nico](#)
 last update: 25/09/2009

Position

[Letpens Jan](#) 01/10/2009

latitude: [Only for Hydrographic service subscribers.](#)
 longitude: [Only for Hydrographic service subscribers.](#)
 system: WGS84
 division: 1'=1000
 accuracy: gps 0~10m
 remarks: Method: Differential Global Positioning System Quality: Surveyed Accuracy: 3 m
 ref. used: [UK Hydrographic Office](#)

 [add position to my marks](#)

show neighbour. wrecks: [members only](#)
[check AIS](#)

[insert new position](#)

The Wreck today

[Letpens Jan](#) 01/10/2009

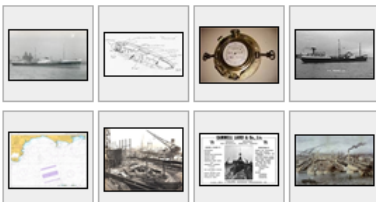
[Only for Hydrographic service subscribers.](#)
 ref. used: [UK Hydrographic Office](#)

[insert wrecksite info](#)

Pictures



[Vleqqeert Nico](#) 25/09/2009
[Pomella](#)
 copyrights: [Unknown - onbekend - inconnu](#)
 ref. used: [www.helderline.nl](#)



[insert new picture](#)

Hydrographic Service UK

WRECK REPORT

HYDROGRAPHIC SERVICE
FOR THE UK

DATABASE

WRECK REPORT

LIVE

The wrecksite has been derived in part from material obtained from the [UK Hydrographic Office](#) with the permission of the [UK Hydrographic Office](#) and Her Majesty's Stationery Office the following authorities.
 © British Crown Copyright, 2008.

History

[Letpens Jan](#) 01/10/2009

[Only for Hydrographic service subscribers.](#)
 ref. used: [UK Hydrographic Office](#)

[insert new history](#)

Documents

[insert new document](#)

About Builder(s)



[Cammell Laird & Co., Birkenhead](#)
 Charles Cammell and Co, iron and steel foundries, was established in 1824. Cammell, Laird and Co. was formed in 1903 when the Laird Brothers amalgamated their company with Charles Cammell and Co. - - The Cammell Laird site at Birkenhead on Merseyside was established in 1824, and has been successfully building, repairing ships right through to present times. The shipyard is in a world famous maritime region and is recognised internationally as having been at the forefront of the British Shipbuilding Industry. - - - - - Cammell Laird used to have their own flag. The flag was used on ships that were in their trials. Only when approved by the buyer, she changed flags



LAT: 51°08,3XXN LON: 1°30,5XXW

